

# Evolution in Natural Surfaces

PATHWAYS  
PATIOS  
GARDEN TRAILS  
LANDSCAPING



[www.TechniSoil.com](http://www.TechniSoil.com)



## Benefits of TechniSoil:

- Ready to use
- Easy to apply
- EPA compliant

  
**TechniSoil**<sup>™</sup>  
North America, LLC  
evolution in natural surfaces  
[www.TechniSoil.com](http://www.TechniSoil.com)  
[info@TechniSoil.com](mailto:info@TechniSoil.com)  
Phone: 877.356.2250

  
**TechniSoil**<sup>™</sup>  
North America, LLC  
evolution in natural surfaces

## Pathway Stabilizer



## Works best with:

*Decomposed Granite*

*Crushed Stone Pathway Mixes*

# Application Instructions

## 1. AGGREGATE SELECTION

Please consult your dealer for recommended material.



Mixes with larger aggregate, such as class 2 base rock (1/2" - 3/4" minus), content are recommended for heavy use areas.

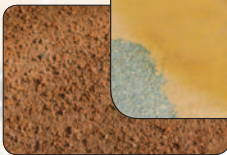
## 2. SITE CONDITIONS

Prepare sub-base.  
Spread & level crushed stone mix/decomposed granite to a 2" depth.



## 3. PRE-WATER

Pre-water surface. Allow 20 - 30 mins for water to penetrate.



Recommended appliers: garden watering can or spray device.

## 4. PLACEMENT

Apply TechniSoil® to surface at **15 sf./gallon**. Allow TechniSoil® to fully absorb through the material.  
30-45 minutes.



## 5. COMPACTION

Compact surface with vibratory plate compactor. We highly recommend multiple passes during this process.

For hard to reach areas, please use a hand tamper.



## 6. TOP COAT

Apply TechniSoil® 'top coat' at **45 sf./gallon**. Allow 24-72 hours for surface to cure before use.



- Do not apply TechniSoil 48 hours before rainfall.
- Clean equipment with water after usage.

## Create a Durable Surface

For more information, please visit:

[www.TechniSoil.com](http://www.TechniSoil.com)

## Existing Pathways

If you have existing pathway or patio, you can also use TechniSoil®.

**Coverage: 15 sf./gallon**

Surface Preparation

1. Follow steps 3,4 and 6 on APPLICATION INSTRUCTIONS

It is recommended to use new DG or crushed stone pathway mixes to assure best results.

## Maintenance Coat

Apply TechniSoil® maintenance coat when needed (12-24 Months). **45 sf./gallon**.

## Weather Tips

Crushed Stone/DG mixes with higher fines, may soften in wet weather conditions, but will solidify once the surface dries.

Crushed Stone/DG mixes with larger aggregate (1/2"-3/4" diameter) will remain harder in wet weather conditions.

Please consult your dealer to determine the recommended material for your application.